

Beach Chalet Athletic Fields Renovation 2009



San Francisco Recreation and Parks
City Fields Foundation



Chronic Shortage of Athletic Fields

2004 independent study
found SF short by 35
soccer fields & 30
baseball diamonds

Greatest shortfall –
3:00-6:30pm weekdays
4,000 SF kids use the
fields afterschool during
spring and fall



The Playfields Initiative

City Fields partnership with Rec/Park was established in 2006

Goal: Address the ongoing shortage of athletic fields in SF & help Rec/Park equitably provide sports facilities

How: Renovate high-use and worn-out athletic fields with synthetic turf and lights and improve efficiency of permit system



To Date: Five field/light renovations



Why Synthetic Turf?

Ability to dramatically increase the amount of playtime on a field

- No rain closures
- No rest/regrowth closures
- Every field can be used year-round

Safe, consistent, level playfields

Saves approx. 1,500,000 gallons of water per field each year

Reduces maintenance

Requires no herbicides or fertilizer



Thorough vetting by Synthetic Playfields Task Force resulted in stringent SF purchasing standards



Garfield Square Playground - 2006



Before



After

Garfield was formerly known as “el parque donde te rompes pie” or “the park where you break your foot”



Silver Terrace Playground - 2006



Before



After

Formerly a field of last resort, Silver Terrace is now the most requested athletic field in San Francisco



Franklin Square Playground - 2007



Before



After

Already a popular artificial turf field, lights were added to Franklin Square to extend play hours



South Sunset Playground - 2008



Before



After

South Sunset is now a clean and safe playfield for local school kids and park neighbors



Crocker Amazon Playground - 2008



Before



After

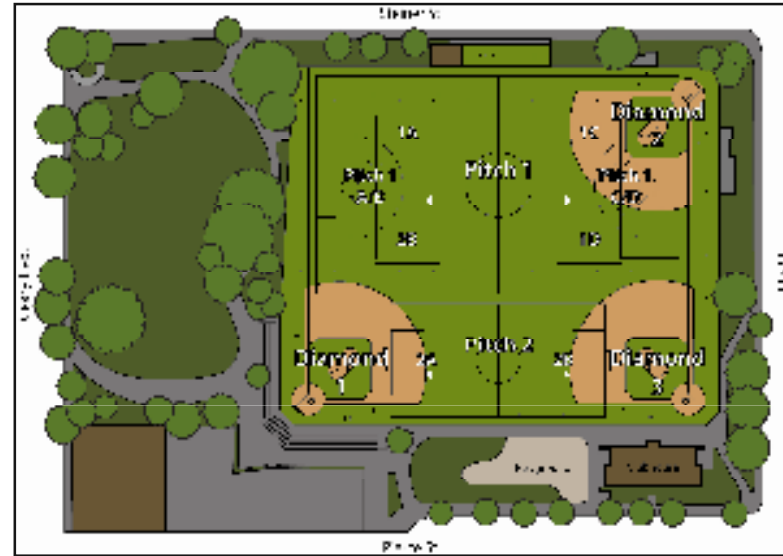
By improving the field layout, two new soccer fields and restrooms were added to the three existing fields at Crocker



Kimbell Playground - 2009



Before



May 2010

Kimbell Playground's athletic field will reopen this Summer!



Why Beach Chalet?



The Beach Chalet Soccer Fields complex is one of the primary ground sports athletic facilities in San Francisco.

During fall, more than 1,550 kids and 600 adults play at Beach Chalet each week.

The field was identified as a good candidate for renovation by a citywide planning group convened in 2006 and 2007



Why Beach Chalet?



Built more than 75 years ago, the Beach Chalet Athletic Fields were last renovated in 1998.



One of the four fields is always out of use for rest and regrowth, leaving just three fields for play.



Why Beach Chalet?



The Beach Chalet Athletic Fields are unsafe and in poor condition due to heavy use, abundant gopher holes, and year-round wet conditions.

In September 2009, a 14 year-old girl broke her ankle during a soccer game at Beach – this is not uncommon.

Despite constant use by kids, Beach Chalet lacks basic family-friendly amenities: clean restrooms, changing stations, play/picnic areas, spectator seating.



More Play on Safer Fields



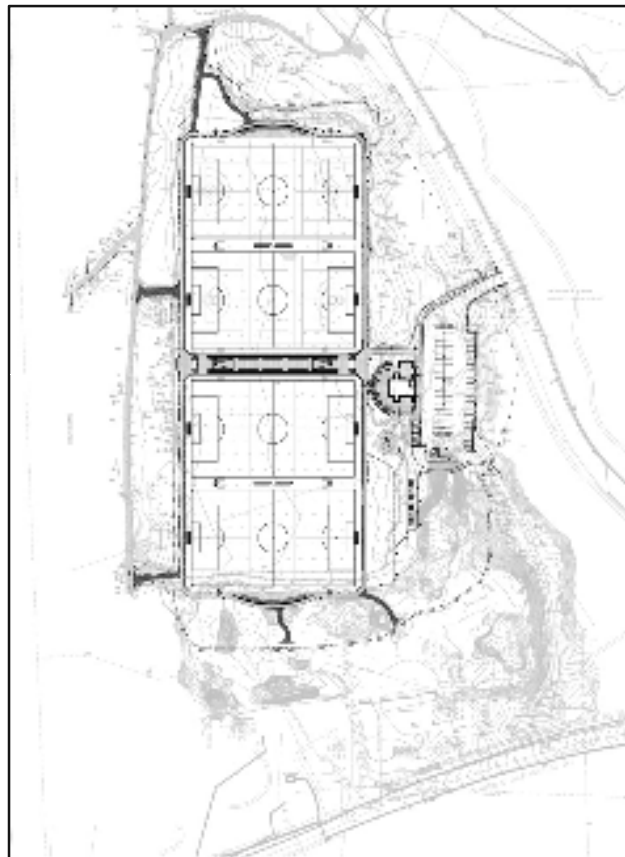
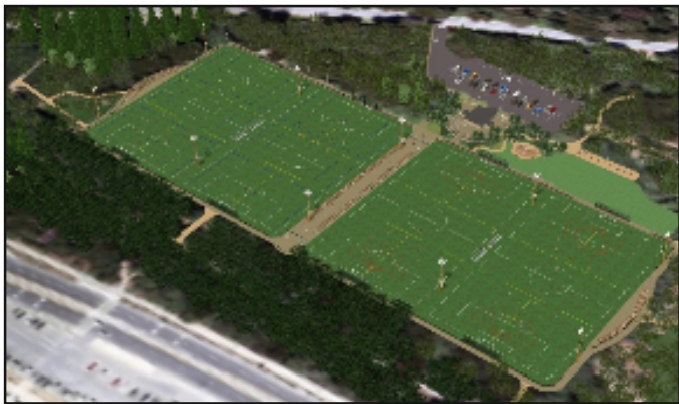
Renovating Beach Chalet with lights and synthetic turf will eliminate all dangerous gopher holes and more than triple the amount of play on those fields.

Currently, the field can host 4,738 hours of annual play. The proposed renovation will add 9,582 hours of new play each year.

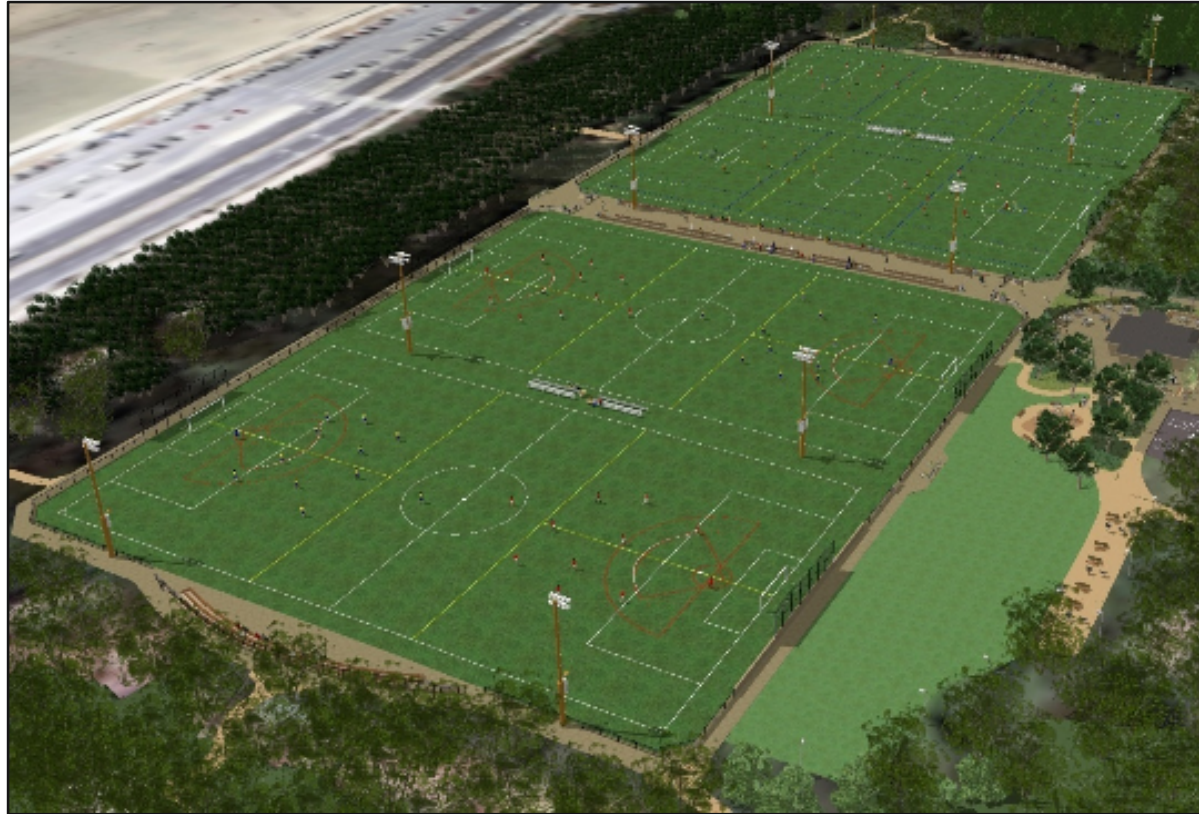
The renovation will also make the facility much more family friendly and inviting for all – athletes, spectators and park visitors.



Proposed Project Plan



Field Improvements



Field View & Center Walkway/Benches



An 18-inch raised walkway featuring built-in spectator benches was designed across the center of the fields instead of tall bleachers. The walkway will also improve circulation and disability access to and through the area.



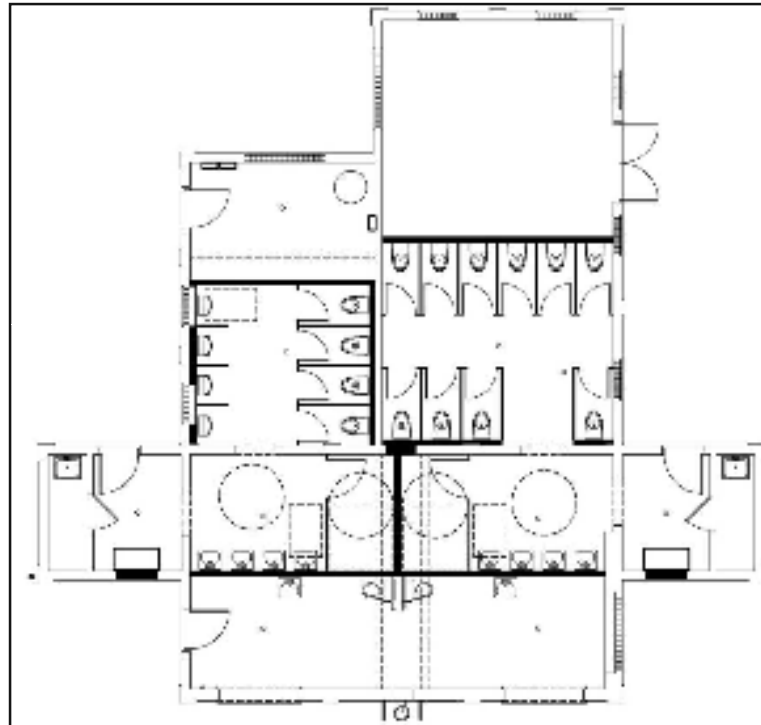
Spectator Plaza and Picnic Area



The crumbled asphalt apron around the restroom is being redesigned to include spectator plaza, a small play structure, drinking fountains, bike racks, trash cans, and new landscaping. Picnic tables and barbeques are being added along the grass warm-up area.

Bathroom Renovation

Parking Lot



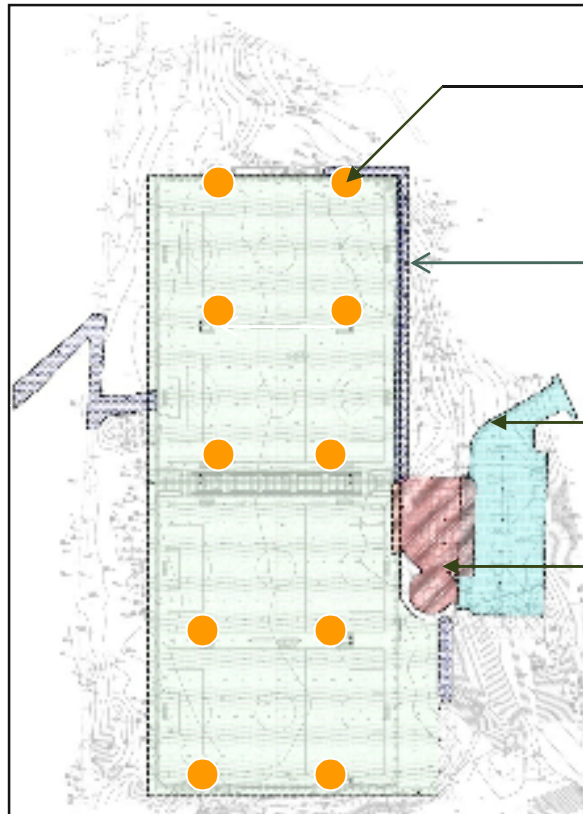
Soccer Fields



Parking Lot Improvements



New Lighting



60' field lights – screened from street view

Pathway lighting to northern spectator seating

Pathway lighting east to parking lot and JFK Dr.

Plaza and picnic/bbq lighting



North Facing View of Field Lights



At just 60-feet, the field lights were designed 10 to 20-foot shorter than standard and were placed on the field to nearly eliminate sightlines from outside the Park.



Field Lights From JFK Dr & Great Hwy



Day



Night

Computer-generated images of the 60' field lights. Photos taken June & September 2009.



Park Stewardship

City Fields provides a grant to the Neighborhood Parks Council to organize local stewardship groups in conjunction with each field renovation. These groups do clean-ups and community building events to get more people involved in our parks.



Anticipated Timeline & Next Steps



June 2009 -
April 2010

Community input &
design development

April 2010

Rec/Park Commission
considers concept plan

June/July 2010

Blueprint development

Aug - Oct. 2010

Bid project

November 2010

Construction begins

September 2011

Field opening, ribbon-cutting
& community block-party

